

OLDE  
HOPE

AMERICAN FOLK &  
DECORATIVE ARTS  
OF DISTINCTION

THE DITTMAR COLLECTION

*Living with Antiques*

at Duck Hollow - a 20th century Journey



## THE DITTMAR COLLECTION

By the time their home and collection were featured in the popular "Living with Antiques" in *The Magazine Antiques* issue of April 1978, Florence and George J. Dittmar, Jr. had been collecting for nearly 40 years. In 1982 we made our first sale to them, a painted 19th century wagon seat soon followed by an eagle carving by Wilhelm Schimmel, beginning a friendship and collaboration lasting two more decades.

George and Florence followed the lead of the great collectors of the 20th c. who pursued American material culture of the 18th and 19th centuries in virtually every category, filling their home at Duck Hollow in Monmouth County, NJ from floor to ceiling and wall to wall! Theirs was not a minimalist approach.

Soon after acquiring their beautiful 18th c. farmhouse and its many dependencies in 1949, they made the acquaintance of celebrated Pennsylvania dealer and artist, David Ellinger, who had become a source for well-known collectors Albert Barnes, Titus Geesey, and Donald Shelley, among others. What followed was an adventure in collecting, with a bedroom in their home christened "David's Room". And it was David Ellinger who accompanied the Dittmars to our shop outside New Hope in 1982.

Throughout the second half of the 20th c., George and Florence were frequent visitors at major shows, such as the Winter Antiques Show in NYC and the Philadelphia Antiques Show, and they purchased from many of the leading dealers in that era, becoming especially fond of Don and Faye Walters and Sam Herrup, among others.



The Dittmars truly delighted in the pieces that caught their eye and their enthusiasm was infectious. George would light up and giggle like a child at Christmas, while Florence, always the lady, would flash her lovely smile and nod approvingly. It was American folk art that particularly attracted their attention, but the collection also included numerous examples of early furniture, pottery, paintings, textiles, metalwork, and treenware.

George and Florence passed in 2002 and the collection went to their two children with whom we had become friends as well, being of the same generation. Over the course of the next two decades, much of the collection was sold privately and at auction but their daughter Trudy lived with many of her favorite pieces in the house in which she had grown up, returning from a life of journalism in Wyoming. It is these items we are now tasked with sending to new homes. What is shown here is only a sampling of the hundreds of pieces remaining in the Dittmar collection. Others will be featured on our website and even more have been sent to auction. But it is our sincere honor and pleasure, a bitter-sweet time, to present what represents a pursuit of passion for two dear friends, exemplary members of America's Greatest Generation.

OLDE  
HOPE

AMERICAN FOLK &  
DECORATIVE ARTS  
OF DISTINCTION



Pennsylvania-German  
decorated schrank from Berks  
County, PA, dated "1761".  
Ht. 80", OAW. 69 3/4", OAD. 25"



Portrait of a Baltimore young lady accompanied by the mother-of-pearl buckle shown in the painting, c. 1830. oil on canvas 30 ½" × 24 ¼"





A fine silk on linen needlework sampler, signed "Ruhanah H. Simpson, aged 10 ys 8 mo 19 d, July 13, 1826". 17 ¼" × 12"



An exercise or lesson book with pictorial cover page inscribed "Ruhana H. Simpson 1831". The cover is watercolor and the interior, with multiple mathematical exercises and drawings, is in pen and ink. 12 ¾" × 8 ¼".



Three fine New England pipe boxes in early/original finishes, c.1800. Left and top in pine, 20" ht. Above, maple, 19" ht.



A carved and painted pine and iron weathervane in the form of a standing Indian with rifle. New York State or Pennsylvania, c.1900. Ht. 43 ½", L. 50 ½"



Four from a collection of six stoneware pitchers with cobalt decoration, New York and Pennsylvania, c.1850, Hts. 12" - 10".



A large 10-gallon stoneware crock with cobalt decoration and labeled "H.B.Pfaltzgraff York, PA 10" c.1840, Ht. 16 1/2" and a lidded stoneware butter crock with cobalt decoration, Pennsylvania, c.1860, Ht. 6", D. 10 3/4"

Large tin handled carrier, American, c.1860. Ht. 13", L. 29 1/2"



All pieces shown in a red-painted pine drysink with central drain, probably Pennsylvania, c.1840-60 Ht. 30 1/2", W. 43 1/4", D. 20 1/4"





A wonderful heart-decorated plant stand in early gray/blue paint shown with a selection of Florence's redware flowerpot collection.  
Ht. 42 ½", W. 44", D. 23 ¼"



An unusually large and impressive tinseled picture of a vase of flowers. Reverse-painted on glass with tinsel backing in original frame. American, c.1870. 34 ½" x 28 ½"



Carved and painted pine miniature farm animals from Pennsylvania, 1900-30.

Pair of carved and painted birds mounted on carved and painted twig bases by the "SLC" carver, Southern Lancaster County, PA, c. 1900. Ht. 8"



A fancifully painted pie safe retaining the original comb-decorated finish. Indiana, c.1860. Pine, poplar, and pierced tin. Ht. 72  $\frac{3}{4}$ ", W. 40", D. 17".



Two fine owl decoys - carved and painted wood with bear claw beaks and glass eyes. Herter Decoy Factory, MN, c.1940.  
Ht. 18 ½" and 20"

Carved and painted beaver att. to Sam Harris, an Ohio farmer, c.1890. In the half-round most likely meant for mounting on a wall as a sign.  
Ht. 18", L. 44 ½"



Cutwork picture with watercolor highlights on a blue paper ground depicting a spread-wing eagle holding a snake with American flag in its beak. Cut inscription reads "American Republicans 24,500 votes Victorious 1844" and "David Parsetts" (probably the recipient). New York, c.1844. Referencing the election of James Harper as mayor of New York, an early leader of the American Republican party.  
16 1/2" x 19 1/2", overall



"PHILADELPHIA FROM THE GREAT TREE IN KENSINGTON UNDER WHICH PENN MADE HIS TREATY WITH THE INDIANS." signed "Elizabeth J. Dudley 1830". Watercolor on paper in a carved walnut frame. 21 1/2" x 26 1/2", overall



A folk art picture tour de force of a clipper ship in full sail in a sea of mica flakes. Cut and painted paper, foil, and mica on a blue paper ground. American, c.1860. 29 3/4" x 39 1/2", overall





Elaborately carved pine spoon rack, dated "1795". Probably Bergen Co., NJ. Ht. 20 ¼", W. 8 ⅞". Bears label on the reverse of "Mrs. deForest"



Hanging wall box with spoon rack and two drawers. Carved pine with original painted finish including a bold heart and the inscription "1768 Meary Hana Farhingrin" Probably Canada, 1768. Ht. 19", W. 14 ¼", D. 9 ¾"



Early Federal valuables chest. Pennsylvania, c.1800-20. Carved walnut, poplar, and pine with original brass pulls and finish. Ht. 17", W. 12 ¾", D. 6 ⅜"



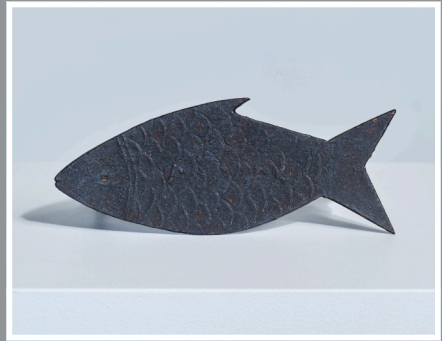


Carved maple ladle with handle ending in a figure of a rooster. Prob. New England, early 19th c. L. 13 ½"



Iron dough scraper with cut-out heart and incised vines. Pennsylvania, early 19th c. L. 3 ¼"

Miniature iron spatula with heart cut-out. Pennsylvania, early 19th c. L. 5 ⅜"



Iron axe holder in the shape of a fish with incised scales from a Conestoga wagon. Pennsylvania, early 19th c. L. 8 ⅛"



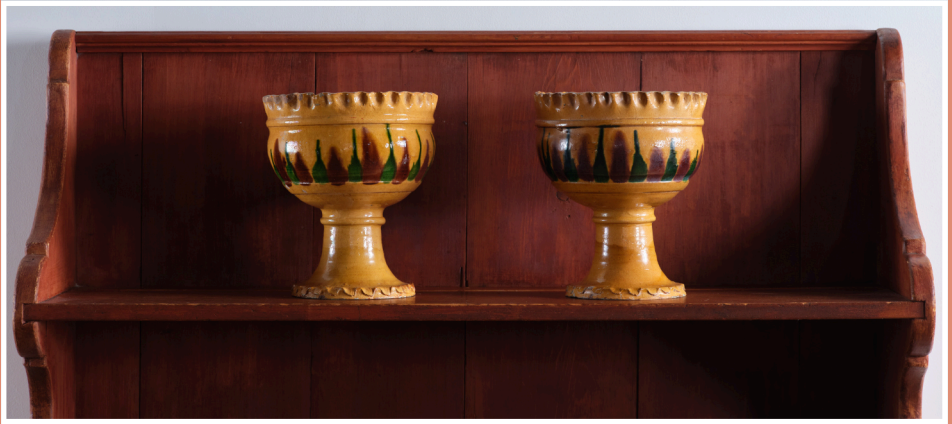
Carved and painted pine standing shelves with shaped sides holding a portion of the Dittmar redware collection. Probably Pennsylvania, c.1800. Ht. 56", W. 40", D. 11"



Glazed redware  
charger with yellow  
slip decoration.  
Pennsylvania,  
c.1830. L. 23", W. 16"



Glazed redware  
plate with coggled  
edge and unusual  
yellow slip  
decoration.  
Pennsylvania,  
c.1830. D. 11 3/4"



A rare pair of glazed redware  
flowerpots on pedestal bases with  
thumb-molded rims, glazed in yellow  
with alternating green and brown slip  
decoration. Probably Vickers family,  
Chester County, PA, c.1840. Ht. 9"



Two-part pine and poplar corner cupboard with arched glazed door and retaining an exceptional grain-painted finish. Juniata Co., PA, c.1830. Ht. 85", OAW 41 1/2".

Mr. Dittmar was so determined to have this cupboard in his dining room that he routed the floor for the feet in order to fit it beneath the room's ceiling beams. It remained in that spot since 1983.





A hanging set of pine shelves with scalloped sides and molded cornice in original red paint. Shown holding some of the Dittmar accessories. Pennsylvania, c.1820  
Ht. 35 ¼", W. 28 ¾", D. 6 ½"

Three fine glazed redware spaniels with coleslaw manes and tail att. to George Wagner, Carbon Co., PA, late 19th c. Hts. 9 ½", 7"



Three miniature glazed redware jugs with applied handles. Pennsylvania, c.1860. Hts. 3"- 5"



Birth and baptismal certificate for "Barbara Herweck" (?) elaborately decorated with angels, birds, and floral designs. Haycock Twp, Bucks County, PA, c.1806. watercolor on paper, 15 ¼" × 12 ½"



A boldy decorated presentation picture for "Benjamin McDonald (and) Margaret McDonald". Attr. to Shenandoah Valley Illuminated Artist, Hampshire County (now WVA), c.1840. watercolor, pen and ink, and metallic paint on paper, 13 ¼" x 11 ¼"



The Town of Schwenksville, Montgomery County, PA, c.1830. watercolor on paper, 15 ½" x 16 ¼", framed.



Cutwork picture love token.  
Signed "D. F. Schmidt".  
Probably Pennsylvania, 1840-60.  
Cut paper, foil, watercolor,  
9 1/2" x 12"



Running deer weathervane.  
New York or Pennsylvania,  
c.1850. Sheet iron with  
traces of weathered silver  
paint. Ht. 38 ¾", L. 36"



A miniature painted and floral decorated tablet-top Windsor side chair. Pennsylvania, c.1820. Ht. 9 ¾"



Miniature paint-decorated tablet-top Windsor armchair. Inscribed under seat, "MADE IN JACKSON PRISON 1872"



Collection of miniature painted chairs and settee, Pennsylvania, mid 19th c.





A large, labeled Hannah Davis bandbox. Interior lined with "1840" dated New Hampshire newspaper and retaining the label "WARRANTED NAILED BANDBOXES; MADE BY HANNAH DAVIS JAFFREY, N. H." Bentwood with wallpaper covering in the pineapple pattern. Ht. 18 ¾", D. 15"



Two miniature wallpaper covered boxes, the blue one with Philadelphia newspaper lining, and a miniature paint-decorated oval lidded box. c.1820-40



A small painting of "Ship Electra passing in Delaware Capes, April 23, 1819....."

Artist unknown, Mid-Atlantic, c.1819.  
oil on pine panel, 10 ¼" × 13 ½"

Reverse with old paper inscription and historic newspaper clipping from *The Philadelphia Evening Bulletin*.



A rare early depiction of Key West, FL. Inscribed in ink, "Key West (Gayo Hueso) from the E. January 1842 from the cupola of the barracks." Unsigned, c.1842. watercolor and ink on paper, 6 ⅝" × 7 ⅝"



U.S.S. Constitution  
Approaching  
Boston Harbor,  
John Charles  
Carroll (signed  
Carroll LR), c.1846.  
Oil on canvas,  
42" × 33 ½".

An exceptional 3-tier  
23-arm chandelier from a  
Vermont meetinghouse,  
early 19th c. tinned sheet  
iron and wire.  
Ht. 28", OAD 28"





Theorem painting of a fruit-filled basket. David Y. Ellinger (1913-2003)  
 Montgomery County, PA, c.1960's. Paint on velvet in the original Ellinger frame, 26 1/8" x 31"  
 Signed L.R.

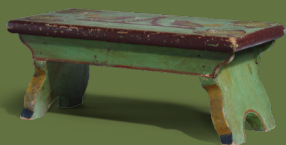
Watercolor drawing of an Amish quilter. David Y. Ellinger, c. 1975. Inscribed on reverse, "To Florence & George, X-mas 1975". In original Ellinger frame, 14" x 13", Signed L.R.



► **BACK COVER:** PAINT-DECORATED FOOTSTOOL, S.E. PENNSYLVANIA, C.1860. HT. 6", L. 14 7/8", D. 6 7/8"

For expanded descriptions and additional items from the Dittmar collection, visit our website [www.oldehope.com](http://www.oldehope.com)

THE DITTMAR COLLECTION  
*Living with Antiques*  
at Duck Hollow - a 20th century Journey



January 17 - March 30, 2024

OLDE  
HOPE

AMERICAN FOLK &  
DECORATIVE ARTS  
OF DISTINCTION



115 East 72nd Street, 1B • New York, NY 10021  
215-297-0200 • [info@oldehope.com](mailto:info@oldehope.com) • [OldeHope.com](http://OldeHope.com)